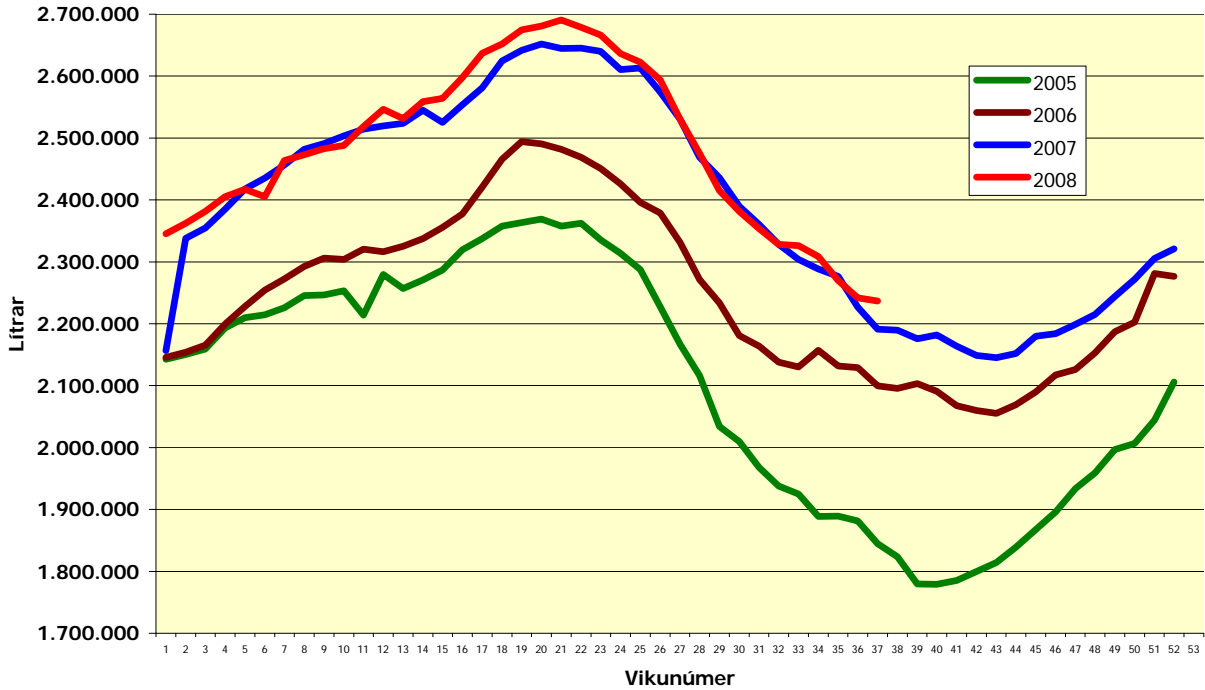




Innvigtun mjólkur hjá aðildarfélögum SAM



Vika	05/06	06/07	07/08	Mismunur 06/07 - 07/08		Mismunur 05/06 - 07/08	
1	2.145.604	2.156.333	2.345.425	189.092	8,77%	199.821	9,31%
2	2.154.161	2.338.101	2.362.368	24.267	1,04%	208.207	9,67%
3	2.165.262	2.354.451	2.381.677	27.226	1,16%	216.415	9,99%
4	2.199.457	2.385.288	2.405.216	19.928	0,84%	205.759	9,35%
5	2.227.699	2.417.878	2.417.185	-693	-0,03%	189.486	8,51%
6	2.254.480	2.435.022	2.405.472	-29.550	-1,21%	150.992	6,70%
7	2.272.433	2.456.517	2.463.814	7.297	0,30%	191.381	8,42%
8	2.292.359	2.481.614	2.472.890	-8.724	-0,35%	180.531	7,88%
9	2.306.021	2.490.967	2.482.835	-8.132	-0,33%	176.814	7,67%
10	2.304.027	2.503.626	2.488.028	-15.598	-0,62%	184.001	7,99%
11	2.320.613	2.514.583	2.518.589	4.006	0,16%	197.976	8,53%
12	2.316.119	2.519.522	2.546.240	26.718	1,06%	230.121	9,94%
13	2.325.248	2.523.672	2.531.327	7.655	0,30%	206.079	8,86%
14	2.337.406	2.544.641	2.558.999	14.358	0,56%	221.593	9,48%
15	2.355.400	2.525.025	2.564.029	39.004	1,54%	208.629	8,86%
16	2.377.267	2.553.825	2.597.708	43.883	1,72%	220.441	9,27%
17	2.420.774	2.580.843	2.636.717	55.874	2,16%	215.943	8,92%
18	2.465.684	2.624.432	2.651.868	27.436	1,05%	186.184	7,55%
19	2.493.985	2.641.536	2.674.808	33.272	1,26%	180.823	7,25%
20	2.490.583	2.651.973	2.680.905	28.932	1,09%	190.322	7,64%
21	2.481.648	2.644.795	2.690.726	45.931	1,74%	209.078	8,42%
22	2.469.082	2.645.124	2.678.851	33.727	1,28%	209.769	8,50%
23	2.450.660	2.639.982	2.666.541	26.559	1,01%	215.881	8,81%
24	2.426.204	2.610.585	2.636.456	25.871	0,99%	210.252	8,67%
25	2.395.930	2.613.276	2.622.670	9.394	0,36%	226.740	9,46%
26	2.378.836	2.574.554	2.593.866	19.312	0,75%	215.030	9,04%
27	2.331.523	2.530.500	2.530.199	-301	-0,01%	198.676	8,52%
28	2.271.340	2.468.793	2.475.150	6.357	0,26%	203.810	8,97%
29	2.233.409	2.435.804	2.414.847	-20.957	-0,86%	181.438	8,12%
30	2.180.917	2.389.745	2.381.742	-8.003	-0,33%	200.825	9,21%
31	2.163.747	2.360.291	2.353.524	-6.767	-0,29%	189.777	8,77%
32	2.137.810	2.328.038	2.328.143	105	0,00%	190.333	8,90%
33	2.130.209	2.303.764	2.326.035	22.271	0,97%	195.826	9,19%
34	2.156.949	2.288.512	2.308.598	20.086	0,88%	151.649	7,03%
35	2.131.590	2.276.748	2.269.877	-6.871	-0,30%	138.287	6,49%
36	2.129.098	2.227.130	2.242.062	14.932	0,67%	112.964	5,31%
37	2.099.945	2.191.102	2.236.810	45.708	2,09%	136.865	6,52%

Samtals **84.793.479** **91.228.592** **91.942.197** **713.605** **0,84%** **7.148.718** **7,84%**