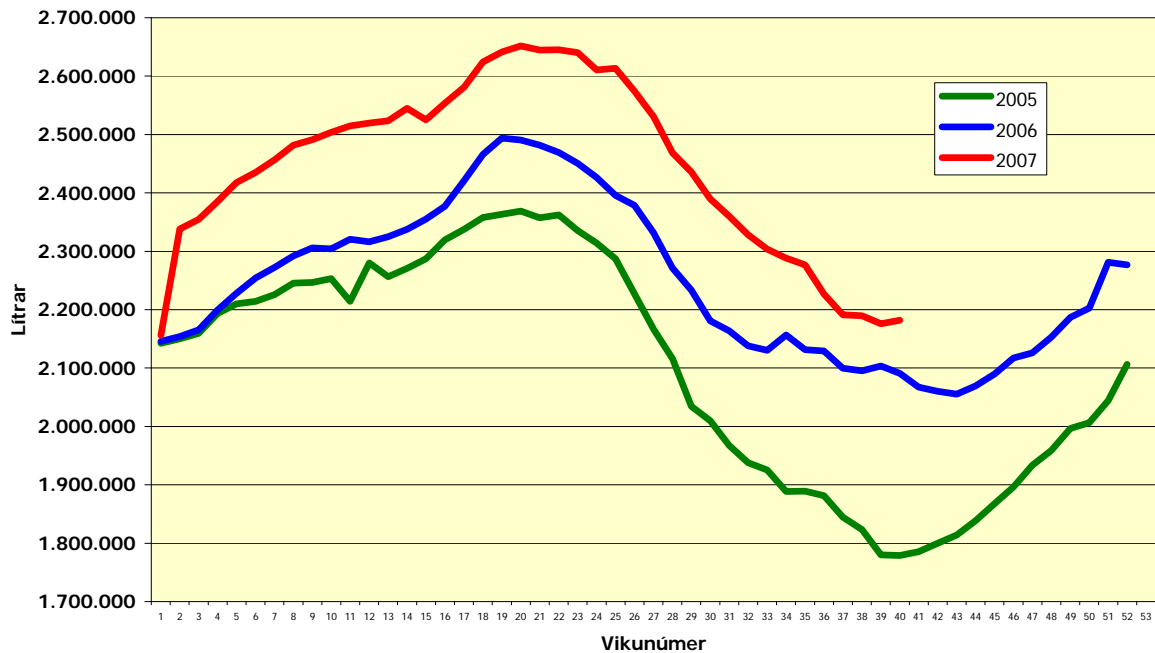




Innvigtun mjólkur á landinu eftir vikum



Vika	2005	2006	2007	Mismunur 2006 - 2007		Mismunur 2005 - 2007	
1	2.142.661	2.145.604	2.156.333	10.729	0,50%	13.672	0,64%
2	2.150.333	2.154.161	2.338.101	183.940	8,54%	187.768	8,73%
3	2.159.198	2.165.262	2.354.451	189.189	8,74%	195.253	9,04%
4	2.193.164	2.199.457	2.385.288	185.831	8,45%	192.124	8,76%
5	2.210.022	2.227.699	2.417.878	190.179	8,54%	207.856	9,41%
6	2.214.295	2.254.480	2.435.022	180.542	8,01%	220.727	9,97%
7	2.226.021	2.272.433	2.456.517	184.084	8,10%	230.496	10,35%
8	2.245.575	2.292.359	2.481.614	189.255	8,26%	236.039	10,51%
9	2.246.613	2.306.021	2.490.967	184.946	8,02%	244.354	10,88%
10	2.253.373	2.304.027	2.503.626	199.599	8,66%	250.253	11,11%
11	2.214.126	2.320.613	2.514.583	193.970	8,36%	300.457	13,57%
12	2.279.794	2.316.119	2.519.522	203.403	8,78%	239.728	10,52%
13	2.256.730	2.325.248	2.523.672	198.424	8,53%	266.942	11,83%
14	2.270.960	2.337.406	2.544.641	207.235	8,87%	273.681	12,05%
15	2.287.052	2.355.400	2.525.025	169.625	7,20%	237.973	10,41%
16	2.319.369	2.377.267	2.553.825	176.558	7,43%	234.456	10,11%
17	2.337.603	2.420.774	2.580.843	160.069	6,61%	243.240	10,41%
18	2.357.865	2.465.684	2.624.432	158.748	6,44%	266.567	11,31%
19	2.363.356	2.493.985	2.641.536	147.551	5,92%	278.180	11,77%
20	2.369.002	2.490.583	2.651.973	161.390	6,48%	282.971	11,94%
21	2.357.466	2.481.648	2.644.795	163.147	6,57%	287.329	12,19%
22	2.362.178	2.469.082	2.645.124	176.042	7,13%	282.946	11,98%
23	2.335.330	2.450.660	2.639.982	189.322	7,73%	304.652	13,05%
24	2.313.795	2.426.204	2.610.585	184.381	7,60%	296.790	12,83%
25	2.287.183	2.395.930	2.613.276	217.346	9,07%	326.093	14,26%
26	2.227.606	2.378.836	2.574.554	195.718	8,23%	346.948	15,57%
27	2.166.828	2.331.523	2.530.500	198.977	8,53%	363.672	16,78%
28	2.116.135	2.271.340	2.468.793	197.453	8,69%	352.658	16,67%
29	2.034.232	2.233.409	2.435.804	202.395	9,06%	401.572	19,74%
30	2.009.586	2.180.917	2.389.745	208.828	9,58%	380.159	18,92%
31	1.967.803	2.163.747	2.360.291	196.544	9,08%	392.488	19,95%
32	1.937.836	2.137.810	2.328.038	190.228	8,90%	390.202	20,14%
33	1.925.122	2.130.209	2.303.764	173.555	8,15%	378.642	19,67%
34	1.888.782	2.156.949	2.288.512	131.563	6,10%	399.730	21,16%
35	1.889.002	2.131.590	2.276.748	145.158	6,81%	387.746	20,53%
36	1.881.329	2.129.098	2.227.130	98.032	4,60%	345.801	18,38%
37	1.844.710	2.099.945	2.191.102	91.157	4,34%	346.392	18,78%
38	1.823.428	2.095.432	2.189.705	94.273	4,50%	366.277	20,09%
39	1.779.787	2.103.259	2.175.672	72.413	3,44%	395.885	22,24%
40	1.778.883	2.090.666	2.182.150	91.484	4,38%	403.267	22,67%

Samtals **86.024.133** **91.082.836** **97.776.119** **6.693.283** **7,78%** **11.751.986** **12,90%**