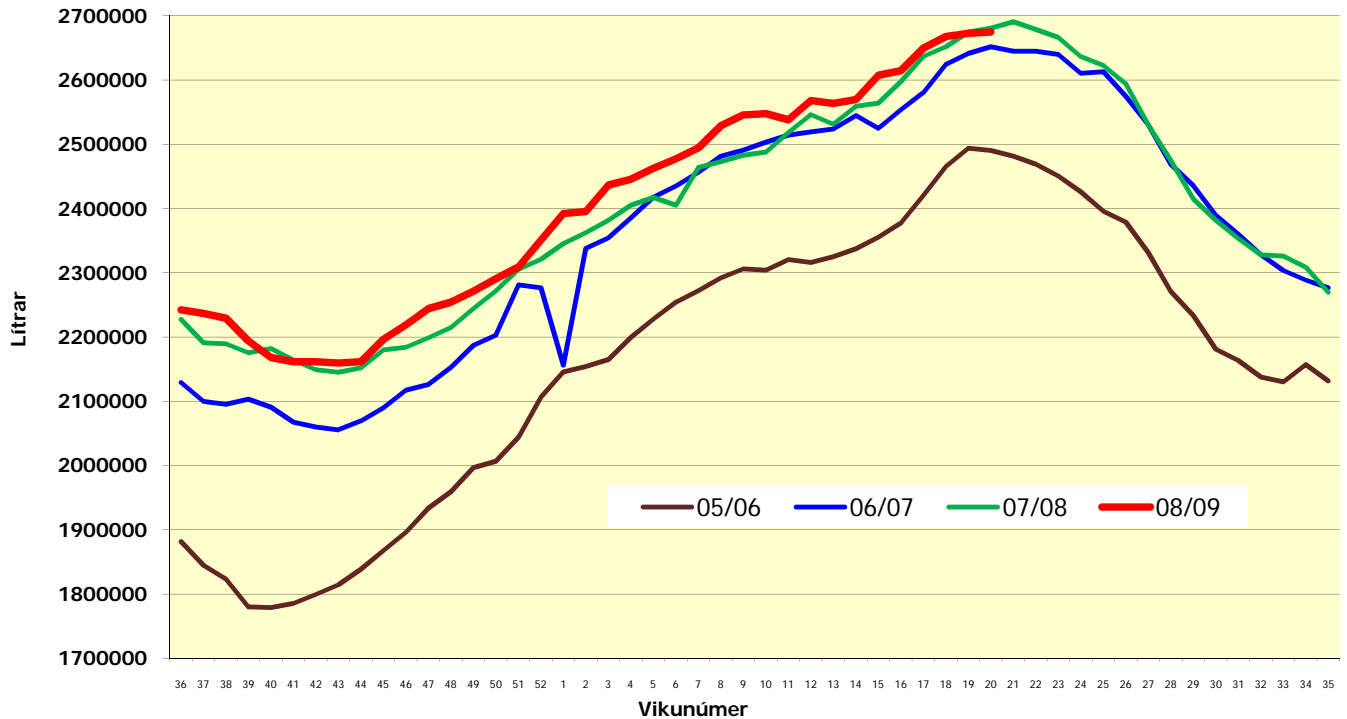




# Innvigtun mjólkur hjá aðildarfélögum SAM



Vika	2006 / 2007	2007 / 2008	2008 / 2009	Breyting frá síðasta ári		Breyting þarsíðasta ári	
36	2.129.098	2.227.130	2.242.062	14.932	0,67%	112.964	5,31%
37	2.099.945	2.191.102	2.236.810	45.708	2,09%	136.865	6,52%
38	2.095.432	2.189.705	2.229.479	39.774	1,82%	134.047	6,40%
39	2.103.259	2.175.672	2.194.155	18.483	0,85%	90.896	4,32%
40	2.090.666	2.182.150	2.167.959	-14.191	-0,65%	77.293	3,70%
41	2.067.542	2.164.013	2.161.483	-2.530	-0,12%	93.941	4,54%
42	2.059.959	2.149.060	2.161.380	12.320	0,57%	101.421	4,92%
43	2.055.371	2.145.071	2.159.681	14.610	0,68%	104.310	5,07%
44	2.069.369	2.151.903	2.161.743	9.840	0,46%	92.374	4,46%
45	2.089.762	2.179.849	2.196.436	16.587	0,76%	106.674	5,10%
46	2.117.051	2.184.102	2.218.833	34.731	1,59%	101.782	4,81%
47	2.126.063	2.199.024	2.244.443	45.419	2,07%	118.380	5,57%
48	2.152.819	2.214.746	2.254.270	39.524	1,78%	101.451	4,71%
49	2.186.908	2.244.164	2.271.192	27.028	1,20%	84.284	3,85%
50	2.202.708	2.271.682	2.290.660	18.978	0,84%	87.952	3,99%
51	2.281.210	2.305.398	2.309.217	3.819	0,17%	28.007	1,23%
52	2.276.597	2.320.877	2.351.138	30.261	1,30%	74.541	3,27%
1	2.156.333	2.345.425	2.392.207	46.782	1,99%	235.874	10,94%
2	2.338.101	2.362.368	2.395.348	32.980	1,40%	57.247	2,45%
3	2.354.451	2.381.677	2.436.561	54.884	2,30%	82.110	3,49%
4	2.385.288	2.405.216	2.445.626	40.410	1,68%	60.338	2,53%
5	2.417.878	2.417.185	2.462.528	45.343	1,88%	44.650	1,85%
6	2.435.022	2.405.472	2.477.564	72.092	3,00%	42.542	1,75%
7	2.456.517	2.463.814	2.494.230	30.416	1,23%	37.713	1,54%
8	2.481.614	2.472.890	2.528.935	56.045	2,27%	47.321	1,91%
9	2.490.967	2.482.835	2.545.613	62.778	2,53%	54.646	2,19%
10	2.503.626	2.488.028	2.547.695	59.667	2,40%	44.069	1,76%
11	2.514.583	2.518.589	2.538.271	19.682	0,78%	23.688	0,94%
12	2.519.522	2.546.240	2.568.134	21.894	0,86%	48.612	1,93%
13	2.523.672	2.531.327	2.563.566	32.239	1,27%	39.894	1,58%
14	2.544.641	2.558.999	2.569.443	10.444	0,41%	24.802	0,97%
15	2.525.025	2.564.029	2.607.449	43.420	1,69%	82.424	3,26%
16	2.553.825	2.597.708	2.614.463	16.755	0,64%	60.638	2,37%
17	2.580.843	2.636.717	2.649.849	13.132	0,50%	69.006	2,67%
18	2.624.432	2.651.868	2.667.609	15.741	0,59%	43.177	1,65%
19	2.641.536	2.674.808	2.673.030	-1.778	-0,07%	31.494	1,19%
20	2.651.973	2.680.905	2.674.922	-5.983	-0,22%	22.949	0,87%

**Samtals 85.903.608 87.681.748 88.703.984 1.022.236 1,19% 2.800.376 3,19%**